

FIND THE CORRECT SIZE

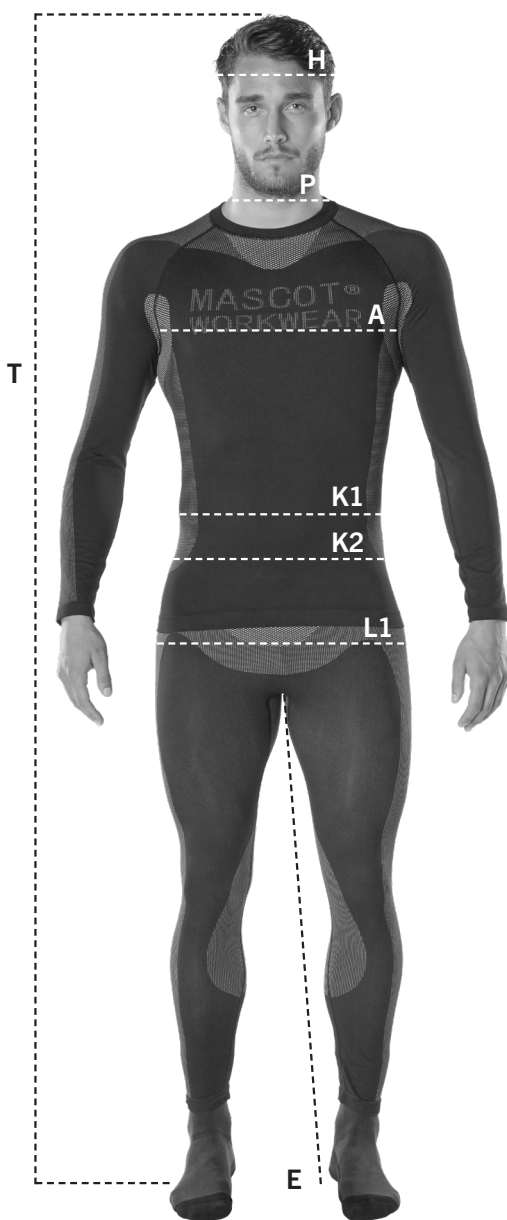
The right size is crucial for the workwear's functionality, and for your comfort and safety. In MASCOT's assortment, many products have a fit that can be used by both men and women. In addition, you will find MASCOT products that are especially designed for women, as well as an assortment for children.

To find the right size, and get the most accurate measurement, we recommend that someone else measures you. Take the measurements close to the body. Also remember to measure your leg length. In most of MASCOT's trousers, you can choose between three leg lengths.

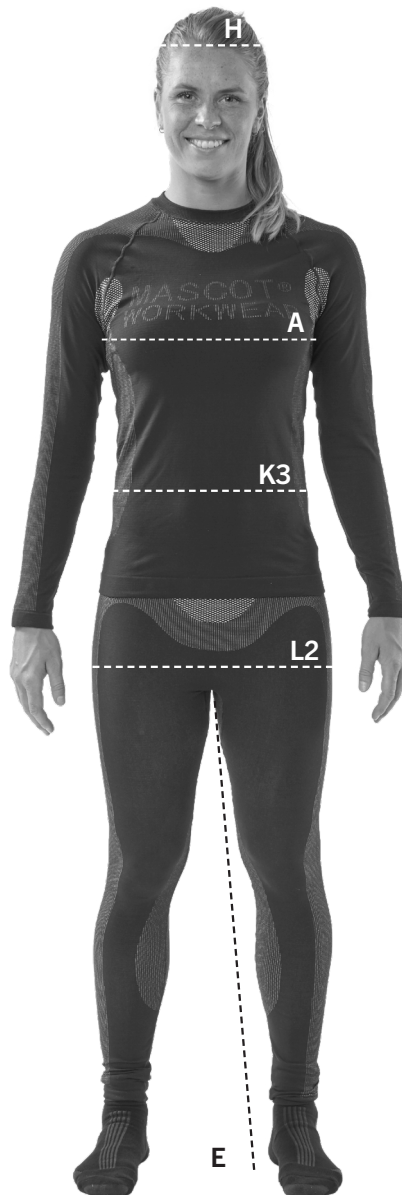
If you're a woman, you have several options

Many of MASCOT's ranges are available in one or more ladies fits. If you choose a product for women, please ensure you measure according to the ladies fit and the sizes form for women. Some of the men's products also fit women. If you pick a men's product, the measurements must be taken from the men's fit and sizes form for men.

Measurements for men's fit



Measurements for ladies fit



H. Head measure

Measure the circumference of the head.

P. Collar size

Measured around the neck – 1 cm above the collar bone.

A. Chest

Measured around the widest part of the chest.

K1. Waist size

Measure the waist size just above the navel. You need to tighten the measuring tape.

K2. Waist size

Measure the waist size just below the navel. You need to tighten the measuring tape.

K3. Waist size

Your waist size is used together with your hip size to find your fit – DIAMOND or PEARL.

L1. Hip size

Measured around the widest point of the hips.

L2. Hip size

Measured with legs together around the widest point of the hip. In MASCOT's products for women, it is the hip measurement that determines which size to choose.

E. Inner seam

The length is measured on the inside of the leg from crotch to floor (barefoot).

E1. Inside leg length (product size)

Inside leg length E1 is the product size. Measured on the inside leg of the product's leg from the crotch down to the lower hem.

T. Height

Your full height.

TRY THE CLOTHES ON!

IN THAT WAY, YOU ARE SURE THAT THE CLOTHING FITS AS IT SHOULD.

HOW TO FIND YOUR SIZE IN THE MEASURING CHART

T-shirts, sweatshirts, jackets and additional tops as well as boilersuits																						
	C42	C43	C44	C45	C46	C47	C48	C49	C50	C51	C52	C54	C56	C58	C60	C62	C64	C66	C68	C70	C72	C74
	XXS		XS		S				M		L		XL	2XL		3XL		4XL		5XL		6XL
A - Chest (cm)	84	86	88	90	92	94	96	98	100	102	104	108	112	116	120	124	128	132	136	140	144	148
A - Chest (inch)	33		34.5		36		38		39.5		41	42.5	44	45.5	47	49	50.5	52	53.5	55	56.5	58

Shirts (work shirts)*																					
	C42	C43	C44	C45	C46	C47	C48	C49	C50	C51	C52	C54	C56	C58	C60	C62	C64	C66	C68	C70	C72
	XXS		XS		S				M		L		XL	2XL		3XL		4XL		5XL	
P - Collar size (cm)					37-38				39-40		41-42		43-44	45-46		47-48	49-50		51-52		53-54
P - Collar size (inch)					14.5				15.5		16.5		17.5	18		19	19.5		20		21

*The following products follow this scheme: 17304, 13004, 12004, 09004, 06004, 00503, 22904, 23004, 23104.

Trousers/bib & braces																						
	C42	C43	C44	C45	C46	C47	C48	C49	C50	C51	C52	C54	C56	C58	C60	C62	C64	C66	C68	C70	C72	C74
EU, gentleman	27	28	28.5	29.5	30.5	31.5	32.5	33.5	34.5	35.5	36.5	38.5	40.5	42.5	44.5	46.5	48.5	50.5	52.5	54.5	56.5	58
UK/US, gentleman	36	37	38	39	40	41	42	43	44	45	46	48	50	52	54	56	58	60	62	64	66	68
F/CH, gentleman																						
EU, lady	C32	C32	C34	C34	C36	C38	C38	C40	C42	C42	C44	C46	C48	C48	C50	C52	C54	C56	C58	C60	C62	C64
UK/US, lady	4	4	6	6	8	10	10	12	14	14	16	18	20	20	22	24	26	28	30	32	34	36
F/CH, lady	34	34	36	36	38	40	40	42	44	44	46	48	50	50	52	54	56	58	60	62	64	66
	XXS		XS		S				M		L		XL	2XL		3XL		4XL		5XL		6XL
K1/K2 Waist size (cm)*	68	70	73	75	78	80	83	85	88	90	93	98	103	108	113	118	123	128	133	138	143	148
K1/K2 Waist size (inch)*	27	28	28.5	29.5	30.5	31.5	32.5	33.5	34.5	35.5	36.5	38.5	40.5	42.5	44.5	46.5	48.5	50.5	52.5	54.5	56.5	58
L1 - Hip (cm)	90	92	94	96	98	100	102	104	106	108	110	114	118	122	126	130	134	138	142	146	150	154
L1 - Hip (inch)	35.5	36	37	38	38.5	39.5	40	41	41.5	42.5	43	45	46.5	48	49.5	51	52.5	54	56	57.5	59	60.5

*Bib & braces are not available in odd-sizes.

E - Leg length (cm)	76	82	90
E - Leg length (inch)	30	32	35

Shorts						
E1 - Trouser leg length, product size (cm)	24	26	28.5	29	40.5	43
E1 - Trouser leg length, product size (inch)	9.5	10.2	11.2	11.4	15.9	19.9

Jeans									
K1/K2 - Waist size (inch)	29	30	31	32	33	34	36	38	40
K1/K2 - Waist size (cm)	73	76	78.5	81	83.5	86	91	96	101

E - Leg length (inch)	30	32	34	36
E - Leg length (cm)	76	82	87	92

Headgear										
	S		M		L		XL		2XL	
H - Head measure (cm)	54	55	56	57	58	59	60	61	62	63
H - Head measure (inch)	21	21.5	22	22.5	23	23.25	23.5	24	24.5	25

WOMEN

MASCOT offers a wide range of products developed especially for women.

Tops										
	XS	S	M	L	XL	2XL	3XL	4XL	5XL	6XL
A - Chest (cm)	76	82	88	96	104	112	120	128	136	144
A - Chest (inch)	30	32	34.5	37.5	41	44	47	50.5	53.5	56.5
L2 - Hip (cm)	86	92	100	108	116	124	132	140	148	156
L2 - Hip (inch)	34	36	39.5	42.5	45.5	49	52	55	58	61.5

Across MASCOT's assortment you will find women's trousers, shorts and skirts in two different fits. It is your body's measurements that determine which fit you should choose. The two fits are called: DIAMOND and PEARL.

Two steps to find the trousers/skirts/shorts that are just perfect for you:

1) Find your fit

Your MASCOT fit will depend on a combination of your waist size (the narrowest part) and your hip measurement (the widest part).

The general rule of thumb is that if there is a difference of more than 20 centimetres between your hip and your waist measurements then you should opt for a DIAMOND fit. If the difference is less than 20 centimetres, on the other hand, then you should choose PEARL.

2) Find your size

You can find your size by measuring the circumference of your hip at its widest point. Keep your legs together when measuring hip width. Check the table below your fit: Determine your size based on the circumference of your hip.

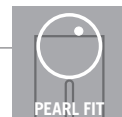


Ladies trousers and skirts

DIAMOND fit: A difference between waist and hip measurements of more than 20 cm.

EU		C34	C36	C38	C40	C42	C44	C46	C48	C50	C52	C54	C56
UK		UK6	UK8	UK10	UK12	UK14	UK16	UK18	UK20	UK22	UK24	UK26	UK28
F		34	36	38	40	42	44	46	48	50	52	54	56
	XS	S	M		L		XL	2XL		3XL	4XL	5XL	6XL
K3 - Waist size (cm)	70	74	78	82	86	90	94	98	104	110	116	122	128
K3 - Waist size (inch)	27.5	29	30.5	32	34	35.5	37	38.5	41	43.5	45.5	48	50.5
L2 - Hip (cm)	96	100	104	108	112	116	120	124	130	136	142	148	154
L2 - Hip (inch)	37.5	39.5	41	42.5	44	45.5	47	49	51	53.5	56	58	60.5

*XS is only available in MASCOT® FOOD & CARE.



Ladies trousers and skirts

PEARL fit: There is a small difference between waist and hip measurements.

EU		C34	C36	C38	C40	C42	C44	C46	C48	C50	C52	C54	C56
UK		UK6	UK8	UK10	UK12	UK14	UK16	UK18	UK20	UK22	UK24	UK26	UK28
F		36	38	40	42	44	46	48	50	52	54	56	58
	XS	S	M		L		XL	2XL		3XL	4XL	5XL	6XL
K3 - Waist size (cm)	74	78	82	86	90	94	98	104	110	116	122	128	136
K3 - Waist size (inch)	29	30.5	32	34	35.5	37	38.5	41	43.5	45.5	48	50.5	53.5
L2 - Hip (cm)	92	95	98	101	104	107	110	115	120	125	130	135	140
L2 - Hip (inch)	36	37.5	38.5	39.5	41	42	43.5	45	47	49	51	53	55

E - Leg length (cm)	76	82
E - Leg length (inch)	30	32

CHILDREN

In MASCOT's assortment you will also find products for children. To find the right size, you should, as a rule, choose the size based on the height of the child.

Children						
Height (cm)	104	116	128	140	152	164
Age (years)	3-4	5-6	7-8	9-10	11-12	13-14
Chest (cm)	54	58	62	68	74	80
Chest (inch)	21	23	24.5	26.5	29	31.5
Waist size (cm)	50	52	54	58	62	66
Waist size (inch)	19.5	20.5	21.5	23	24.5	26
Hip (cm)	58	62	66	72	78	84
Hip (inch)	23	24.5	26	28.5	30.5	33

FOOTWEAR

You spend many hours a day using your shoes. That's why it's important that you choose them carefully. The size and fit of safety shoes can vary slightly depending on the protective toe cap and sole.

That's why we recommend that you try the shoes on before you buy them. This ensures that you choose the correct size and get a shoe with a fit that matches your feet.

MASCOT's size chart generally follows the standard. Footwear in the smaller sizes (sizes 35-41) are available in a slimmer fit (width 8) than the larger sizes (sizes 39-52) which, depending on the product, are available in either width 10 or 11.

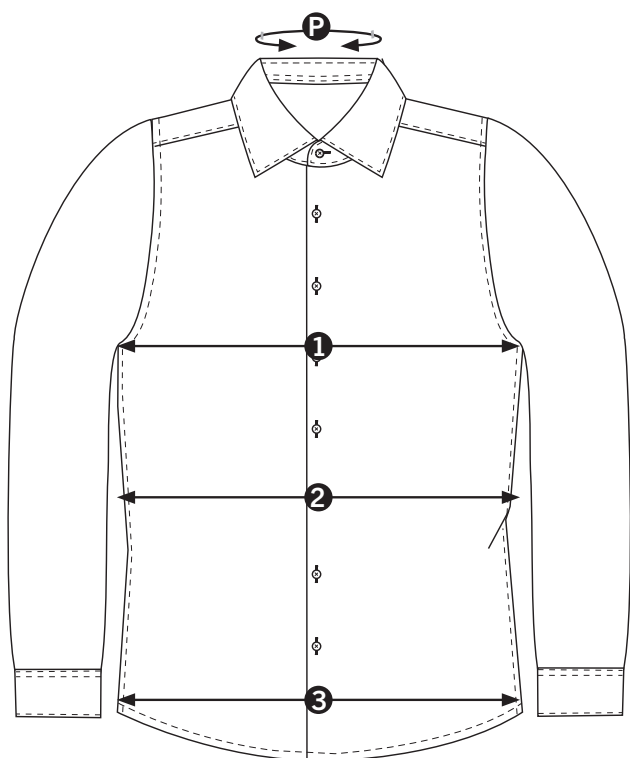
Size	35	36	37	38	39	40	41	42	43	44	45	46	47	48	49	50	51	52
Width 8																		
EU	0835	0836	0837	0838	0839	0840	0841											
F	0835	0836	0837	0838	0839	0840	0841											
UK, lady	L 2.5	L 3.5	L 4	L 5	L 6	L 6.5	L 7											
US, lady	L 4	L 5	L 5.5	L 6.5	L 7.5	L 8	L 8.5											
Width 10																		
EU					1039	1040	1041	1042	1043	1044	1045	1046	1047	1048	1049	1050	1051	1052
F					1039	1040	1041	1042	1043	1044	1045	1046	1047	1048	1049	1050	1051	1052
UK					6	6.5	7	8	9	10	10.5	11	12	13	14	15	15.5	16.5
US					7	7.5	8	9	10	11	11.5	12	13	14	15	16	16.5	17.5
Width 11																		
EU					1139	1140	1141	1142	1143	1144	1145	1146	1147	1148	1149	1150		
F					1139	1140	1141	1142	1143	1144	1145	1146	1147	1148	1149	1150		
UK, men					M 6	M 6.5	M 7	M 8	M 9	M 10	M 10.5	M 11	M 12	M 13	M 14	M 15		
US, men					M 7	M 7.5	M 8	M 9	M 10	M 11	M 11.5	M 12	M 13	M 14	M 15	M 16		

CORPORATE WEAR - GENTLEMAN

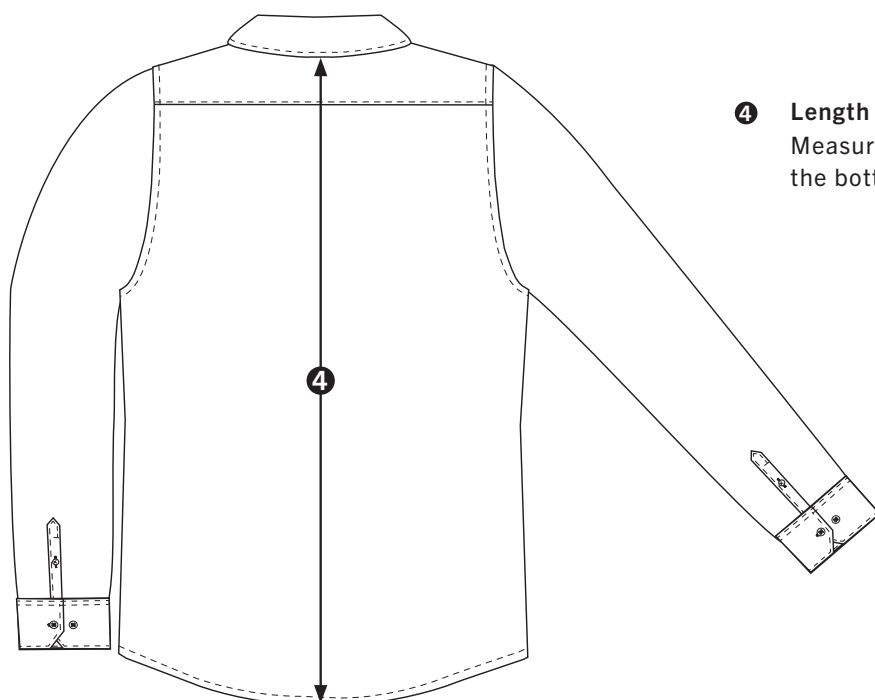
How to find your shirt size

In MASCOT's assortment you will find a selection of classic shirts for men. The shirts are available in different fits and in Basic, Premium and Signature quality. To find the right size, measure one of your existing shirts. Compare the measurements with the measurement chart, in the fit you want. Choose the size that matches your needs.

The following products follow these schemes: 50631, 50632, 50633 and shirts in qualities: 984, 745, 750, 741, 742, 744.



- P Collar size**
Your neck measurement. Measured around the neck – 1 cm above the collar bone.
- 1 Chest**
Measure under the armpits. Multiply by two for the full measurement.
- 2 Waist size**
Measure at the narrowest point on the shirt. Multiply by two for the full measurement.
- 3 Hem**
Measure in a straight line along the bottom of the shirt. Multiply by two for the full measurement.



- 4 Length**
Measure from the lowest point of the collar to the bottom of the shirt.

Shirts – Slim fit								
EU Size	37	38	39	40	41	42	43	44
	37-38		39-40		41-42		43-44	
UK/US Size	14.5	15	15.5	15.5	16	16.5	17	17.5
	14.5-15		15.5		16-16.5		17-17.5	
F/CH Size	37	38	39	40	41	42	43	44
	37-38		39-40		41-42		43-44	
P - Collar size (cm)	37	38	39	40	41	42	43	44
P - Collar size (inch)	14.5	15	15.5	15.5	16	16.5	17	17.5
1 - Chest (cm)	102	102	108	108	114	114	122	122
1 - Chest (inch)	40	40	42.5	42.5	45	45	48	48
2 - Waist size (cm)	94	94	100	100	106	106	114	114
2 - Waist size (inch)	37	37	39.5	39.5	41.5	41.5	45	45
3 - Hem (cm)	98	98	104	104	110	110	118	118
3 - Hem (inch)	38.5	38.5	41	41	43.5	43.5	46.5	46.5
4 - Length (cm)	79	79	80	80	81	81	82	82
4 - Length (inch)	31	31	31.5	31.5	32	32	32.5	32.5

Shirts – Modern fit												
EU Size	37	38	39	40	41	42	43	44	45	46	47	48
	37-38		39-40		41-42		43-44		45-46		47-48	
UK/US Size	14.5	15	15.5	15.5	16	16.5	17	17.5	17.5	18	18.5	19
	14.5-15		15.5		16-16.5		17-17.5		17.2-18		18.5-19	
F/CH Size	37	38	39	40	41	42	43	44	45	46	47	48
	37-38		39-40		41-42		43-44		45-46		47-48	
P - Collar size (cm)	37	38	39	40	41	42	43	44	45	46	47	48
P - Collar size (inch)	14.5	15	15.5	15.5	16	16.5	17	17.5	17.5	18	18.5	19
1 - Chest (cm)	108	108	114	114	120	120	128	128	136	136	144	144
1 - Chest (inch)	42.5	42.5	45	45	47	47	50.5	50.5	53.5	53.5	56.5	56.5
2 - Waist size (cm)	102	102	108	108	114	114	122	122	130	130	138	138
2 - Waist size (inch)	40	40	42.5	42.5	45	45	48	48	51	51	54.5	54.5
3 - Hem (cm)	106	106	112	112	118	118	126	126	134	134	142	142
3 - Hem (inch)	41.5	41.5	44	44	46.5	46.5	49.5	49.5	53	53	56	56
4 - Length (cm)	79	79	80	80	81	81	82	82	83	83	84	84
4 - Length (inch)	31	31	31.5	31.5	32	32	32.5	32.5	32.5	32.5	33	33

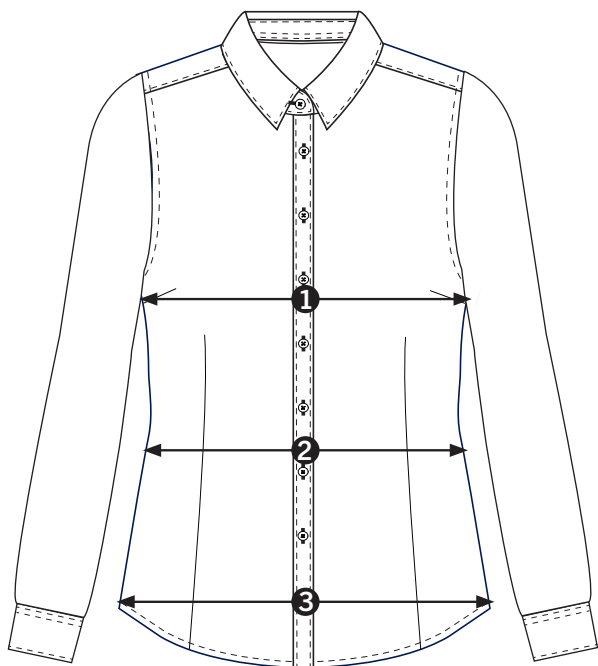
Shirts – Classic fit													
EU Size	40	41	42	43	44	45	46	47	48	49	50		
	39-40		41-42		43-44		45-46		47-48		49-50		51-52
UK/US Size	15.5	16	16.5	17	17.5	17.5	18	18.5	19	19.5	19.5		
	15.5	16-16.5		17-17.5		17.2-18		18.5-19		19.5		20	20.5-21
F/CH Size	40	41	42	43	44	45	46	47	48	49	50		
	39-40		41-42		43-44		45-46		47-48		49-50		51-52
P - Collar size (cm)	40	41	42	43	44	45	46	47	48	49	50	52	54
P - Collar size (inch)	15.5	16	16.5	17	17.5	17.5	18	18.5	19	19.5	19.5	20.5	21.5
1 - Chest (cm)	120	126	126	134	134	142	142	150	150	158	158	166	174
1 - Chest (inch)	47	50	50	53	53	56	56	59	59	62	62	65.5	68.5
2 - Waist size (cm)	120	126	126	134	134	142	142	150	150	158	158	166	174
2 - Waist size (inch)	47	49.5	49.5	53	53	56	56	59	59	62	62	65.5	68.5
3 - Hem (cm)	120	126	126	134	134	142	142	150	150	158	158	166	174
3 - Hem (inch)	47	49.5	49.5	53	53	56	56	59	59	62	62	65.5	68.5
4 - Length (cm)	80	81	81	82	82	83	83	84	84	84	84	84	84
4 - Length (inch)	31.5	32	32	32.5	32.5	32.5	32.5	33	33	33	33	33	33

CORPORATE WEAR - LADY

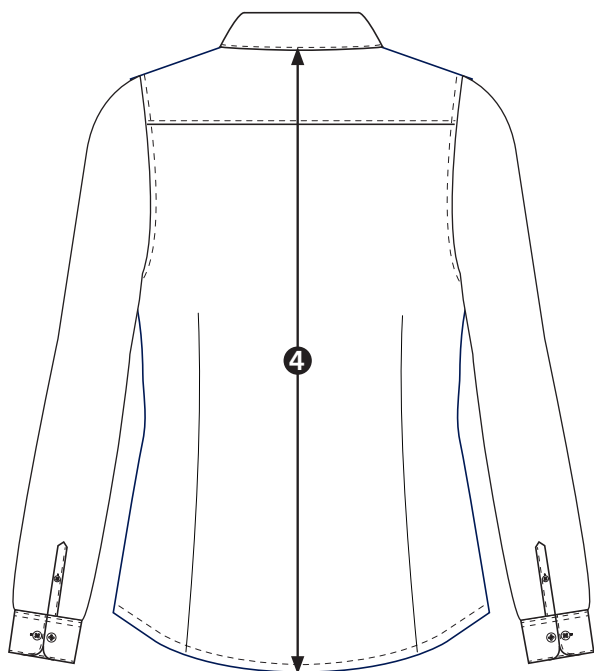
How to find your shirt size

MASCOT's assortment includes a selection of classic shirts for women. Shirts are available in various different fits and in the qualities Basic and Premium.

To find the right size, simply measure one of your existing shirts. Then compare the measurements against our measurement chart for the fit you would like. Then select the size that best matches your needs.



- 1 Chest**
Measure under the armpits. Multiply by two for the full measurement.
- 2 Waist size**
Measure at the narrowest point on the shirt. Multiply by two for the full measurement.
- 3 Hem**
Measure in a straight line along the bottom of the shirt. Multiply by two for the full measurement.



- 4 Length**
Measure from the lowest point of the collar to the bottom of the shirt.

Shirts – Modern fit							
EU Size	34	36	38	40	42	44	46
UK Size	6	8	10	12	14	16	18
US Size	2	4	6	8	10	12	14
F/CH Size	36	38	40	42	44	46	48
1 - Chest (cm)	88	92	96	100	104	108	112
1 - Chest (inch)	34.5	36	37.5	39	40.5	42.5	44
2 - Waist size (cm)	76	80	84	88	92	96	100
2 - Waist size (inch)	30	31.5	33	34.5	36	37.5	39
3 - Hem (cm)	92	96	100	104	108	112	116
3 - Hem (inch)	36	38	39	40.5	42.5	44	45.5
4 - Length (cm)	64	65	66	67	68	69	70
4 - Length (inch)	25	25.5	25.5	26	26	27	27.5

Shirts – Classic fit										
EU Size	34	36	38	40	42	44	46	48	50	52
UK Size	6	8	10	12	14	16	18	20	22	24
US Size	2	4	6	8	10	12	14	16	18	20
F/CH Size	36	38	40	42	44	46	48	50	52	54
1 - Chest (cm)	94	98	102	106	110	114	118	124	130	136
1 - Chest (inch)	37	38.5	40	41.5	43	44.5	46	48.5	51	53.5
2 - Waist size (cm)	88	92	96	100	104	108	112	118	124	130
2 - Waist size (inch)	34.5	36	37.5	39	40.5	42.5	44	46	48.5	51
3 - Hem (cm)	98	102	106	110	114	118	122	128	134	140
3 - Hem (inch)	38.5	40	41.5	43	44.5	46	48	50	52.5	55
4 - Length (cm)	64	65	66	67	68	69	70	71	72	73
4 - Length (inch)	25	25.5	25.5	26	26	27	27.5	27.5	28	28.5